

A GP's Reality: What 15 Years of Data Reveals

Key findings from the French General Medicine Observatory (OMG) data, collected from over 100 GPs for 15 years, debunking common misconceptions and detailing the complexity of daily practice.

The Anatomy of a GP Consultation



The average consultation lasts **16 minutes.**



2.2 health problems are managed per visit.

This number rises to an average of 4 problems for patients over 80.



17% of consultations end with **NO medication prescribed.**

GPs often provide advice and reassurance instead of an automatic prescription.



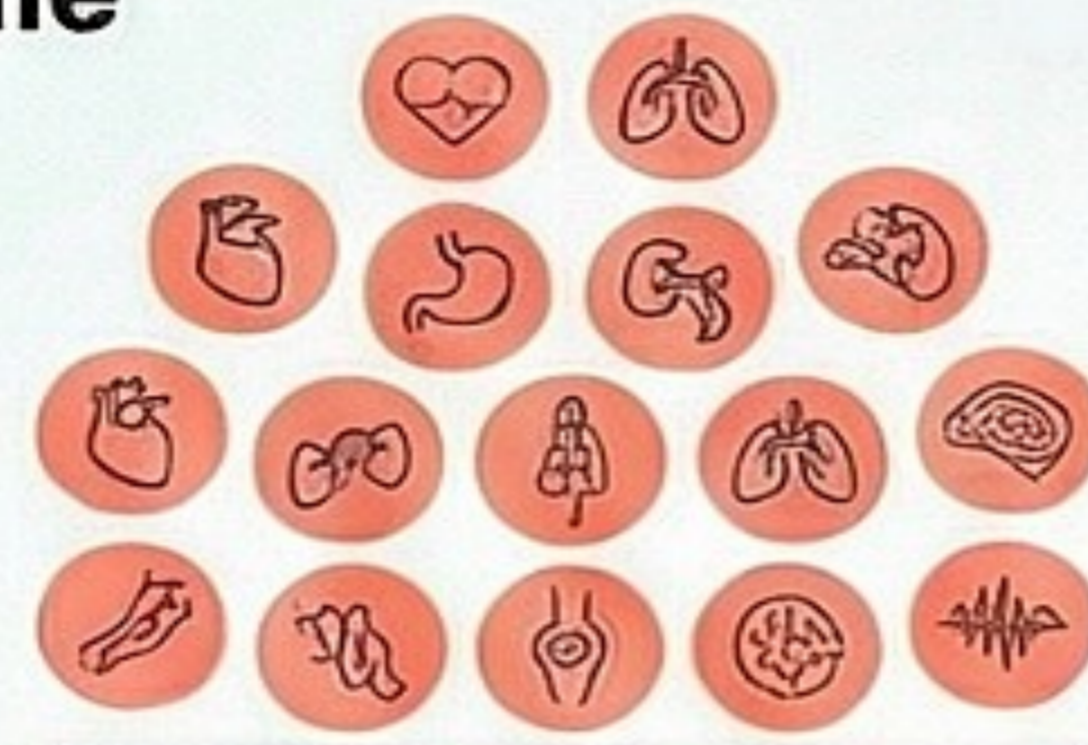
Only **7%** of consultations result in a referral to a specialist.

GPs resolve the vast majority of patient issues themselves.

The Patient & Condition Landscape

The "25/50 Rule"

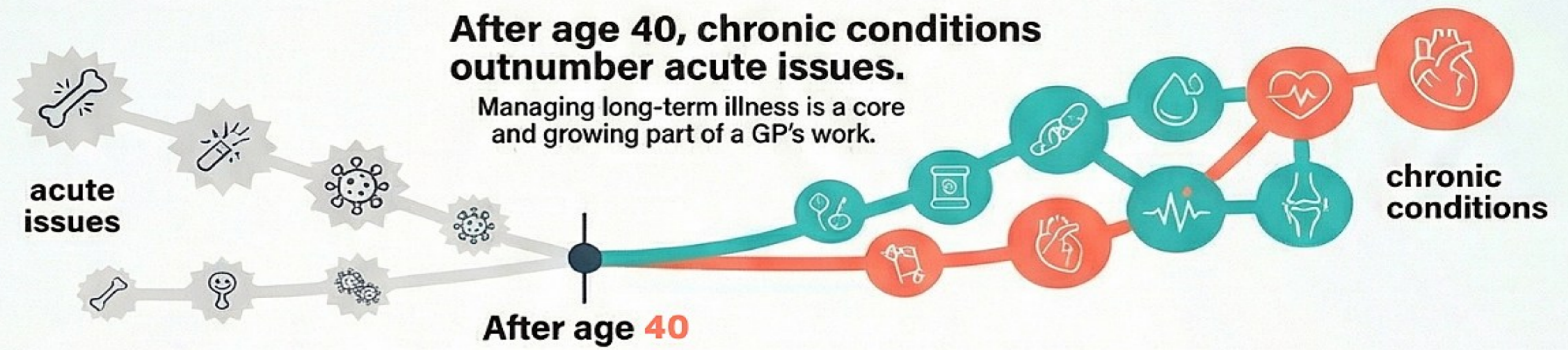
25 conditions make up **50%** of all activity.



over **250** different clinical situations encountered in a single year.

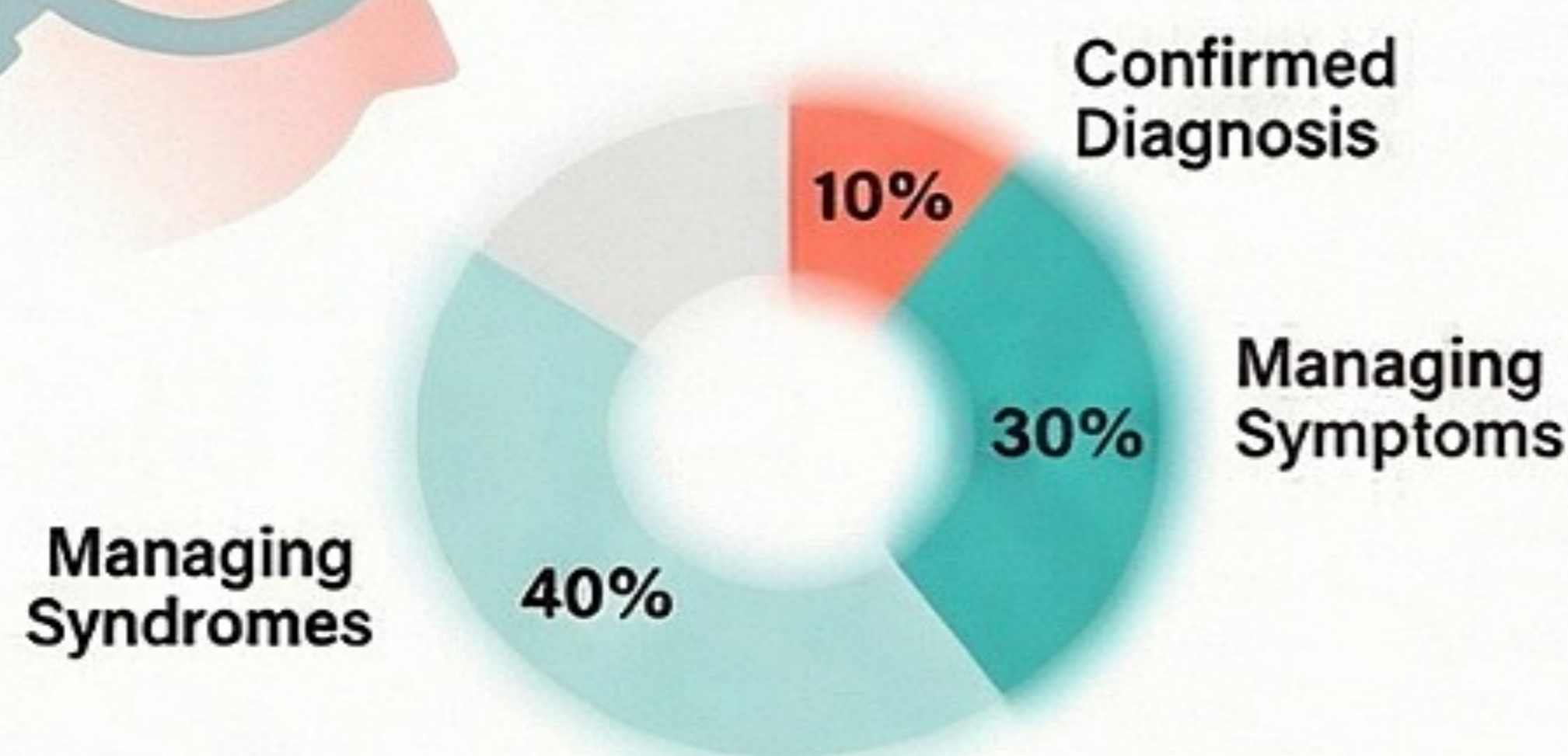
After age 40, chronic conditions outnumber acute issues.

Managing long-term illness is a core and growing part of a GP's work.



A confirmed diagnosis is made in only **10%** of initial consultations.

Multimorbidity is the norm: **60%** of patients have multiple chronic conditions.



Nearly **80%** of these disease combinations are unique to the individual patient.

